

CREATING STICKERS

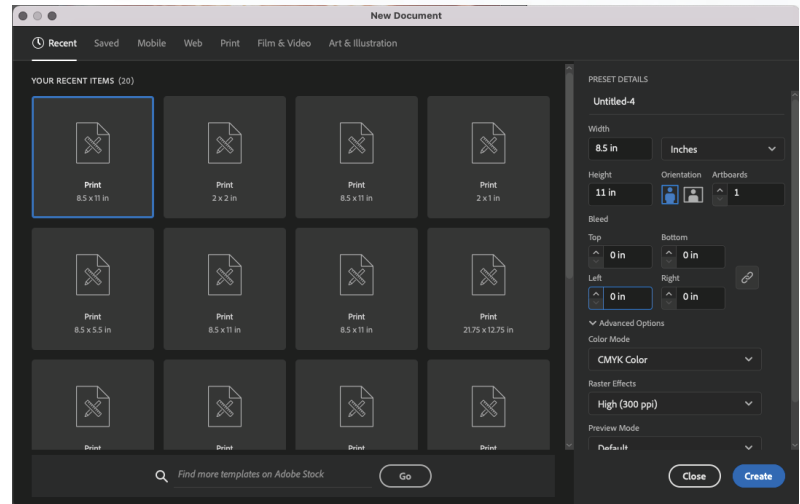
using **Ai** Adobe® Illustrator™

Ai

KISS-CUT STICKERS

INITIAL SET UP

- Begin by creating a new document
- Choose the size of your document height and width
- Bleed will be set to 0
- Click Create



BLEED AND MARGIN

- Use the ruler guides to make a 1/2" margin on the top and bottom of your sheet
- Place another ruler guides on the right and left side 1/4" from the edge
- If your sticker has a bleed, please make sure the sticker design is 1/8" outside of cut line
- If your sticker does not need a bleed, please make sure the sticker is 1/8" inside the cut line
- There needs to be 1/16" between each stickers cut line



Example of sticker with no bleed and the design 1/8" inside cut line

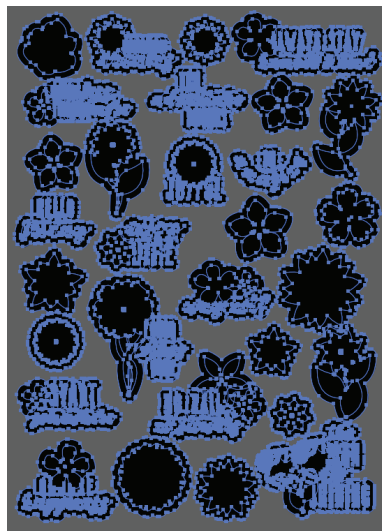
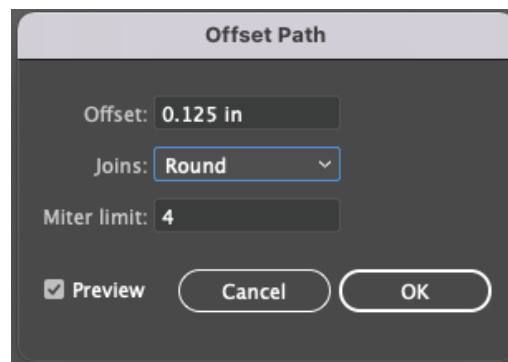


Example of sticker with 1/8" bleed



ADDING CUT LINE

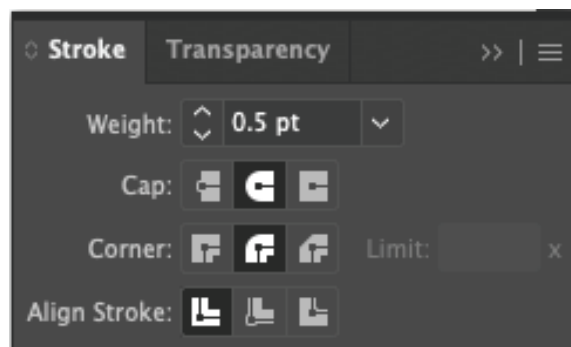
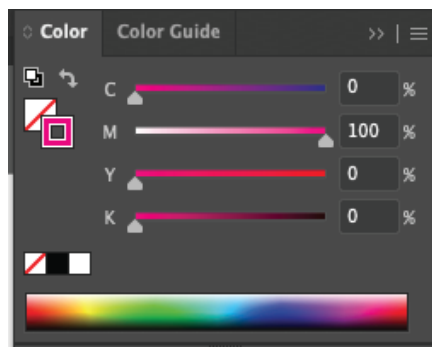
- Select your entire sticker document
- Copy and Paste the document and move it to the side of the art board
- Change all the colors on the duplicate to no outline and all black fill
- Select Effect > Pathfinder> Unite
- Select Object > Offset Path
- Set the Offset to 0.125 in > Joins to Round > OK
- Select Effect > Pathfinder> Unite (again)
- Turn Black Fill to an Outline
- Change Outline to 100% Magenta
- Change Stroke weight to 0.5 pt, cap: rounded edge, Corner: Rounded Corners, Align Stroke to Middle.
- Move cut path over stickers to align them around the stickers



After Offset path



After last pathfinder unite



DESIGN LAYOUT

Here is an example of how a design layout should look with the magenta lines outlining the stickers and correct measurements between the stickers and around the edge of the document.



EXPORTING TO PDF

- File > Save As
- Choose Destination and Name your document
- Change File Format to Adobe PDF (pdf)
- Click Save
- Select Marks and Bleeds Tab on left hand side of dialog box
- Uncheck All Printer's Marks and Document Bleed Settings
- Select Save PDF

